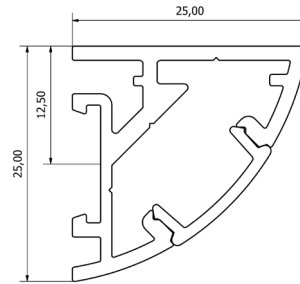
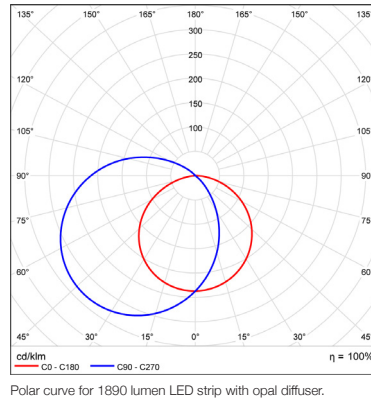
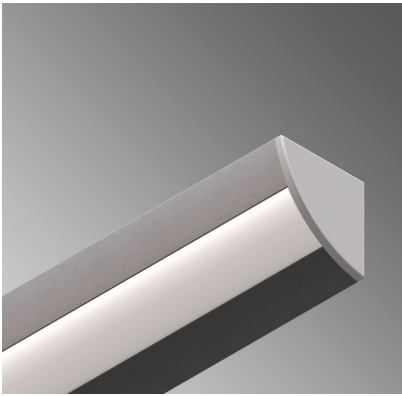


ANGLE ANDY 25



The Angle Andy 25 profile is perfect for mounting in corners of joinery, corners of perpendicular walls or into the corner of a wall and ceiling. Angle Andy 25 features one smooth side, meaning it is not confined to corner mounting, but can also be mounted with one side of the extrusion visible - ideal for wall washing or glass cabinetry.

TECHNICAL DATA

APPLICATIONS	Task lighting in kitchen cabinetry lighting for shelving or display units hallway lighting wall-washing	MATERIALS	Extruded aluminium body Polycarbonate diffuser AES plastic end caps	POWER SUPPLY	24V DC - remote driver options ranging from 6 W up to 320 W
INSTALLATION	Interior Exterior (with IP65 LED strip)	FINISH	Natural silver anodised or custom powder coat	DIMMABLE	Various options available, please enquire.
MOUNTING	Surface-mounted Rod suspended	LIGHT SOURCE	LED ribbon strip		

FEATURES

- Unique mounting clip design for easy installation
- V-groove for accurate drilling and strip alignment
- Polycarbonate diffuser – UV resistant
- Max. 20 W per metre
- IP 65 20 W strip not feasible

ACCESSORIES



EC-AA25-GR
End cap



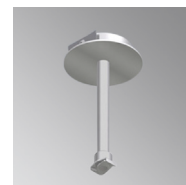
CFS-12
Mounting clip



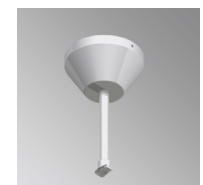
JN-ST-12
Straight joiner



JN-90-12
90 degree joiner



SRK-1-S | SRK-1-W
Rod suspension kit
(Rod not included)



SRK-6-S | SRK-W
Rod suspension kit
(Rod not included)



ROD-0.5M | ROD-1M
| ROD-2M
Suspension rod -
0.5m | 1m | 2m