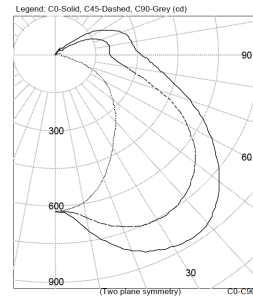
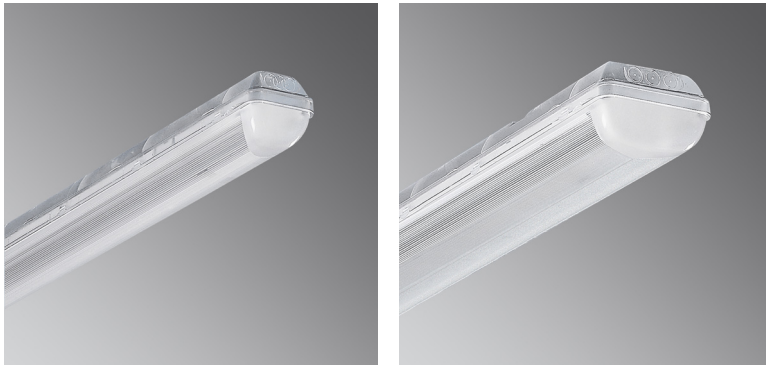
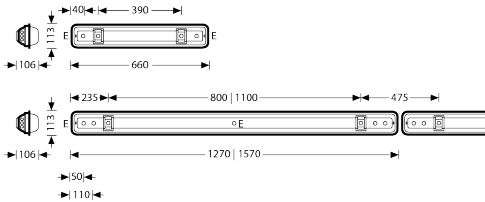


Aragon Plus

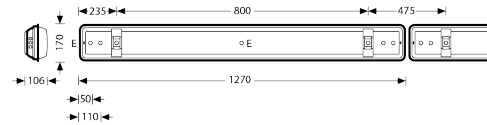


Colour	transparent
Degree of protection	IP66
Safety class	I
Hot wire test	850°C
Impact resistance	6J / IK08
LOR	1.00

Single



Twin



Luminaire Type

Surface-mounted IP66 LED luminaire made of UV-stabilised PC.

Mounting Types

Mounting with stainless steel fixing clamps (included). Suspended mounting possible via optional accessories. Suitable for areas with high risk of fire due to limited surface temperatures and a high protection rating. With wire clamp of stainless steel for steel strip suspension Aragon SB or for chain suspension on-site.

Applications

Ceiling and wall luminaires for damp environments and covered exterior areas. Advantageous with applications requiring increased mechanical stability.

Optical System

Frosted polycarbonate diffuser with finely structured front ends, impact-resistant, UV-stabilised, smooth outer, inner longitudinal prisms. Diffuser manufactured from one piece, mechanically robust. Secure fixing of diffuser with tool-free clip-in quick-release catches.

Luminaire Body

Luminaire body of PC, flame-resistant and recyclable. With push-outs on ceiling side and front ends for mains cable routing and through-wiring via heat-resistant inner wiring. Luminaire body transparent.

LED System

Output	Power	Current	Efficacy	L80	CRI	Ambient Temp
1500lm	12.9W	500mA	116lm/W	50,000h	Ra>80	up to +35°C
2125lm	18.3W	700mA	116lm/W	50,000h	Ra>80	up to +35°C
3000lm	25.9W	500mA	116lm/W	50,000h	Ra>80	up to +35°C
4250lm	36.6W	700mA	116lm/W	50,000h	Ra>80	up to +35°C
5900lm	50.9W	500mA	116lm/W	50,000h	Ra>80	up to +35°C
8300lm	71.6W	700mA	116lm/W	50,000h	Ra>80	up to +35°C
3750lm	32.3W	500mA	116lm/W	50,000h	Ra>80	up to +35°C
5300lm	45.7W	700mA	116lm/W	50,000h	Ra>80	up to +35°C

Step 1 Select luminaire	Step 2 Select width	Step 3 Select length	Step 4 Select output	Step 5 Select CCT	Step 6 Select control	Step 7 Select emergency
Aragon T Plus	Single	600mm <i>(single only)</i>	1500lm <i>(600 single)</i>	3000K - 830 <i>(on request)</i>	non-dim - ET	Non-maintained <i>(600 only)</i>
	Twin -2w	1200mm	2125lm <i>(600 single)</i>	4000K - 840	DALI - ETDD	Maintained <i>(1200 single only)</i>
		1500mm <i>(single only)</i>	3000lm <i>(1200 single)</i>		Proximity Sensor on/off - ETS	
			4250lm <i>(1200 single)</i>		Proximity Sensor dim to 10% - ETS10	
			5900lm <i>(1200 twin)</i>		Sensor + Repeater - ETS MASTER	
			8300lm <i>(1200 twin)</i>			
			3750lm <i>(1500 single)</i>			
			5300lm <i>(1500 single)</i>			